



Product Sheet



For over 27 years, iCS Communications has been supplying our customers effective solutions. We are committed to giving our customers the best service possible, giving high level technical expertise with a friendly face.

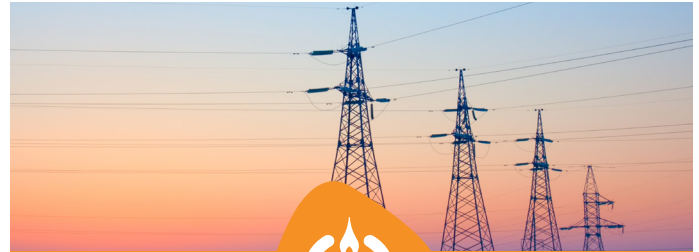
Why choose iCS Communications

iCS Communications works with over 20 of the top UK gas and electricity suppliers, from market staples like British Gas and SSE, to new upstarts like OVO Energy and Axis. By working with a wide range of suppliers, we can offer you a comparison that really can show you the best the market can offer, plus be flexible to suit your individual business needs.

Our account overview service is the cornerstone of our offering and includes a 20-point bill analysis. We not only find where savings can be made, but also make sure there is nothing you have been overcharged for.

Our cost analysis is not only clear, but also works out your savings in relative terms. This means that you will know how much money you should see coming off your monthly bill. We know that contacting your energy company can be a painful experience, with long hold times on the phone and confusing emails filled with jargon. As part of our service, we can communicate with the suppliers, so you don't have to! Saving you time, and your sanity!

Call iCS Communications today on 0800 9 77 88 99 to find out more about our energy services and book a no obligation review.



Features and Benefits:

- Clear comparisons, so you know where you are saving money
- Contracts to suit your business, in both term and price
- Access to a UK-based customer care team for ongoing advice and support
- Energy audits to help manage consumption
- Easy-to-understand pricing so you know the real costs to your business



About iCS Communications

iCS Communications is an independent supplier of business telecoms, data and energy to UK businesses. With more than two decades' experience, we provide you with value for money by offering the essential services you need to operate efficiently.